



# The SEAT Leon

Product Guide - June 2025

# Pricing – 5 Door

Leon SE	Model Code	Fuel	kW	CO <sub>2</sub> (WLTP)	Fuel Economy (WLTP)	NO <sub>x</sub>	VRT Rate	Road Tax	RRP	ROTR
Leon 1.5 TSI 115hp SE	KLG24X	Petrol	85	127 g/km	5.6 l/100km	22.6 mg/km	17.50%	€200	€30,070	€30,920
Leon 1.5e TSI 115HP DSG SE	KLG26Z	Petrol	85	117 g/km	5.3 l/100km	12.7 mg/km	16.00%	€190	€33,475	€34,325
Leon 2.0 TDI 115hp SE	KLG2JX	Diesel	85	119 g/km	4.5 l/100km	30.6 mg/km	16.00%	€190	€32,380	€33,230
Leon 2.0 TDI 150hp DSG SE	KLG2LZ	Diesel	110	123g/km	4.7 l/100km	23.8 mg/km	16.75%	€200	€37,695	€38,545

## Leon SE Plus

Leon 1.5 TSI 115hp SE+	KLG24X	Petrol	85	130 g/km	5.8 l/100km	22.6 mg/km	17.50%	€200	€31,090	€31,940
Leon 1.5e TSI 115HP DSG SE+	KLG26Z	Petrol	85	120 g/km	5.4 l/100km	12.7 mg/km	16.00 %	€200	€34,480	€35,330
Leon 2.0 TDI 115hp SE+	KLG2JX	Diesel	85	122 g/km	4.6 l/100km	30.6 mg/km	16.75 %	€200	€33,645	€34,495
Leon 2.0 TDI 150hp DSG SE+	KLG2LZ	Diesel	110	126g/km	4.8 l/100km	23.8 mg/km	17.50%	€200	€39,015	€39,865

## Leon FR

Leon 1.5TSI 204hp e-hybrid FR	KLG50Y	PHEV	150	7 g/km	0.4 l/100km	5.9 mg/km	7.00 %	€140	€43,855	€44,705
-------------------------------	--------	------	-----	--------	-------------	-----------	--------	------	---------	---------

# Pricing – Sportstourer

Leon SE	Model Code	Fuel	kW	CO <sub>2</sub> (WLTP)	Fuel Economy (WLTP)	NO <sub>x</sub>	VRT Rate	Road Tax	RRP	ROTR
Leon 1.5 TSI 115hp SE	KLD24X	Petrol	85	128 g/km	5.7 l/100km	22.6 mg/km	17.50%	€200	€31,060	€31,910
Leon 1.5e TSI 115HP DSG SE	KLD26Z	Petrol	85	119 g/km	5.4 l/100km	12.7 mg/km	16.00 %	€200	€33,845	€34,695
Leon 2.0 TDI 115hp SE	KLD2JX	Diesel	85	120 g/km	4.6 l/100km	30.6 mg/km	16.00%	€190	€ 32,810	€33,660
Leon 2.0 TDI 150hp DSG SE	KLD2LZ	Diesel	110	124g/km	4.7 l/100km	23.8 mg/km	16.75%	€200	€37,910	€38,760

## Leon SE Plus

Leon 1.5 TSI 115hp SE+	KLD24X	Petrol	85	133 g/km	5.8 l/100km	22.6 mg/km	19.25%	€210	€32,705	€33,555
Leon 1.5e TSI 115HP DSG SE+	KLD26Z	Petrol	85	122 g/km	5.4 l/100km	13.2 mg/km	16.75 %	€200	€35,140	€35,990
Leon 2.0 TDI 115hp SE+	KLD2JX	Diesel	85	123 g/km	4.7 l/100km	30.6 mg/km	16.75 %	€200	€ 34,095	€34,945
Leon 2.0 TDI 150hp DSG SE	KLD2LZ	Diesel	110	127g/km	4.8 l/100km	23.8 mg/km	17.50%	€200	€39,250	€40,100

## Leon FR

Leon 1.5TSI 204hp e-hybrid FR	KLD50Y	PHEV	150	97g/km	0.4 l/100km	5.9 mg/km	7.00 %	€140	€45,555	€46,405
-------------------------------	--------	------	-----	--------	-------------	-----------	--------	------	---------	---------

Optional extras and Irish standard equipment may have an effect on the CO2 and Fuel Economy figures. The CO2 & Fuel Economy figures are the official figures obtained from tests under standardised EU test conditions, More information on vehicle testing & WLTP can be found at: <https://www.seat.ie/corporate/wltp-standard.html>. Information valid as of: 26.06.2025. Subject to change.

ROTR: Recommended on the road price is RRP including delivery charges of €850 as recommended by SEAT Ireland.

Please note every effort has been made to ensure the contents of this publication (including RRP, CO2, fuel consumption and technical information) were accurate and up-to-date at the time of publishing (26.06.2025). SEAT Ireland reserves the right to change specification, prices and withdraw products from sale without notice. Any such alternations will be notified to SEAT Retailers at the earliest opportunity. Please consult your local SEAT retailer for the latest product information.

# Your car. Always connected.

Want a seamless digital experience? The new SEAT Leon keeps you constantly connected. Behind the wheel or outside your car. Download the SEAT CONNECT App and use your smartphone to access vehicle data. Or open SEAT CONNECT through the touchscreen to start planning your route or organise your playlist. Now you can locate parking slots, see real-time traffic maps and get route information to improve your experience even more. Always there, always on. That's what real connectivity means.

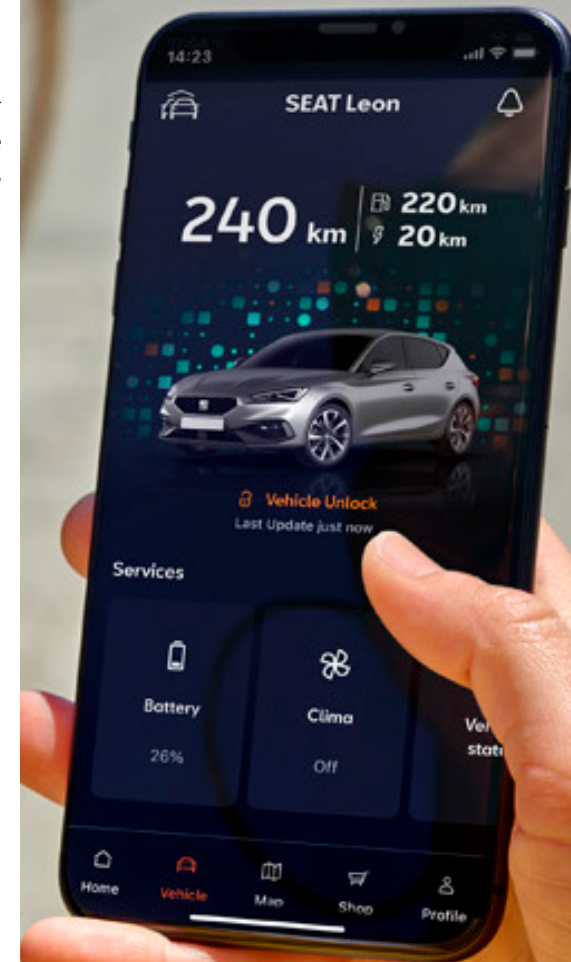
## Standard Connectivity (Included for 10 Years)

- Enrollment via 2KOV
- Enrollment via Pairing Code
- Delete User/ Restore Factory Settings
- Legal Notice
- Privacy Mode & Service Deactivation
- Data Plan (fees apply)
- Static Data Upload
- Online Infotainment Update (OTA)
- Online System Update (OTA)
- Personalisation
- Store
- Breakdown Call
- Customer Care
- Vehicle Health Report
- Vehicle Status
- Service Scheduling
- Driving Data
- Horn & Turn Signals
- Area Alert
- Speed Alert
- Anti-Theft Alert
- Remote Lock & Unlock
- Parking Position

- **Online POI Search (Navi Only)**
- **Online Destination Import (Navi Only)**
- **Online Route Import (Navi Only)**
- **Online Map Update (Navi Only)**
- **Online Voice Assistant (Navi Only)**
- **Internet Radio (Navi Only)**

## Connectivity Plus (Included for 3 Years for Navi Systems)

- Online Traffic Information
- Online Route Calculation
- Parking Stations (Dynamic POI)
- Petrol Stations (Dynamic POI)







SE & SE PLUS trim.

# Leon – SE.

## Standard Specification:

- 16" Design Alloy Wheels
- Keyless Engine Start
- Electronic Vehicle Immobiliser
- Air-Conditioning
- LED Headlights
- Eco LED Rear Lights
- Front Fog Lights
- Front & Rear Park Distance Control
- SEAT CONNECT
- Adaptive Cruise Control
- Headlight Assist (Auto High Beam)
- Wireless Android Auto & Apple CarPlay
- Interior Chrome Detailing
- Folding Grab Handles
- Leather Gear Shift Knob (Manual Only)
- Leather Multi-Functional Steering Wheel
- Grey Interior Roof Cloth
- Front Assist System (Auto Emergency Braking)
- Lane Assist
- Dynamic Traction Support (XDS)
- Driver & Front Passenger Airbag
- Side Airbag in Front with Curtain Airbag & interaction airbag in front

- Front & Rear Seatbelt Reminder
- Electronic Parking Brake
- Speed Related Steering Assist
- Exterior Mirrors (Heated & Electronically Adjusted)
- Interior Ambient Lighting
- Sun Visors with Mirror & Illumination
- Interior Auto-Dimming Rear-View Mirror
- Reading Lights (2 Front & 2 Rear)
- 10.4" Infotainment System
- 10.25" Digital Instrument Display
- 7 Speakers
- 2 USB C Sockets in Front
- Digital Radio (DAB)
- Bluetooth (Phone & Media)
- Front & Rear Power Windows
- Height Adjustment for Front Seats
- Manual Lumbar Adjustment for Right Front Seat
- Black Roof Rails (Sportstourer only)
- Traffic Sign Recognition
- Intelligent Speed Assist
- Emergency Steering & Turn Assist
- Attention & Drowsiness Assist
- Event Data Recorder
- Towbar Prep (Wiring)
- Front Cross Traffic Assist



# Leon – SE Plus.

## Standard Specification: [Bold items in addition to SE]

- **17" Dynamic Alloy Wheels**
- Keyless Engine Start
- Electronic Vehicle Immobiliser
- Air-Conditioning
- **Daytime Running Lights w/ Auto Headlight Control**
- LED Headlights
- Eco LED Rear Lights
- Front Fog Lights
- **Rear View Camera**
- Front & Rear Park Distance Control
- SEAT CONNECT
- Adaptive Cruise Control
- Headlight Assist (Auto High Beam)
- Wireless Android Auto & Apple CarPlay
- Interior Chrome Detailing
- Folding Grab Handles
- Leather Gear Shift Knob (Manual Only)
- Leather Multi-Functional Steering Wheel
- Grey Interior Roof Cloth
- Front Assist System (Auto Emergency Braking)
- Lane Assist
- Dynamic Traction Support (XDS)
- Driver & Front Passenger Airbag
- Interior Auto-Dimming Rear-View Mirror

- Side Airbag in Front with Curtain Airbag & interaction airbag in front
- Front & Rear Seatbelt Reminder
- Electronic Parking Brake
- Speed Related Steering Assist
- Exterior Mirrors (Heated & Electronically Adjusted)
- **LED Interior Lights**
- Sun Visors with Mirror & Illumination
- Reading Lights (2 Front & 2 Rear)
- 10.4" Infotainment System
- 10.25" Digital Instrument Display
- 7 Speakers
- 2 USB C Sockets in Front
- Digital Radio (DAB)
- Bluetooth (Phone & Media)
- Front & Rear Power Windows
- Height Adjustment for Front Seats
- Manual Lumbar Adjustment for Right Front Seat
- Black Roof Rails (Sportstourer only)
- Traffic Sign Recognition
- Intelligent Speed Assist
- Emergency Steering & Turn Assist
- Attention & Drowsiness Assist
- Event Data Recorder
- Towbar Prep (Wiring)
- Front Cross Traffic Assist
- **Dark Tinted Rear Windows**





FR trim.



# Leon – FR

## Standard Specification:

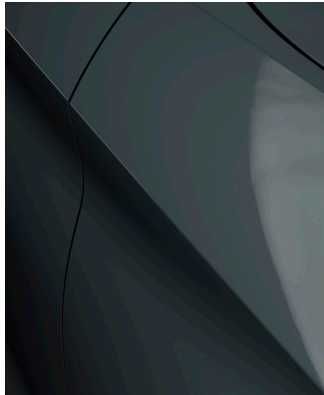
- 18" Machined Alloy Wheels
- Keyless Engine Start
- Electronic Vehicle Immobiliser
- 3- Zone Air-Conditioning
- 10.25" Digital Cockpit (Non Customisable)
- Full LED Headlights & Taillights
- Front Fog Lights
- Front & Rear Park Distance Control
- Drive Profile Selection
- SEAT CONNECT
- Adaptive Cruise Control
- Headlight Assist (Auto High Beam)
- Wireless Android Auto, Apple CarPlay
- Centre Front Armrest
- Interior Chrome Detailing
- Leather Multi-Functional Steering Wheel
- Grey Interior Roof Cloth
- Illuminated Scuff Plates in Door Aperture
- 12.9" Navigation System
- Dynamic Traction Support (XDS)
- Front Assist System (Auto Emergency Braking)
- Lane Assist
- Dynamic Traction Support (XDS)
- Driver & Front Passenger Airbag
- Side Airbag in Front with Curtain Airbag
- Front & Rear Seatbelt Reminder
- Electronic Parking Brake
- Exterior Mirrors (Heated & Electronically Adjusted)
- Folding Exterior Mirrors
- Sun Visors with Mirror & Illumination
- Interior Auto-Dimming Rear-View Mirror
- Rain Sensor (Auto Wipers)
- Reading Lights (2 Front & 2 Rear)
- Interior Ambient Lighting
- 7 Speakers
- USB C Sockets in 2Front & 2Rear (Charging)
- Bluetooth (Phone & Media)
- Digital Radio (DAB)
- Front & Rear Power Windows
- Dark Tinted Rear Windows
- Black Roof Rails (Sportstourer only)
- Height Adjustment for Front Seats
- Intelligent Speed Assist
- Traffic Sign Recognition
- Emergency Steering Support & Turn Assist
- Front Cross Traffic Assist





# Colours.

SE SE  
SE+ SE+  
FR FR  
Standard  
Optional



**FIORD Blue** SE SE+ FR  
9K9K - Soft



**MIDNIGHT BLACK** SE SE+ FR  
0EOE - Metallic



**SAPPHIRE Blue** SE SE+ FR  
N1N1 - Metallic



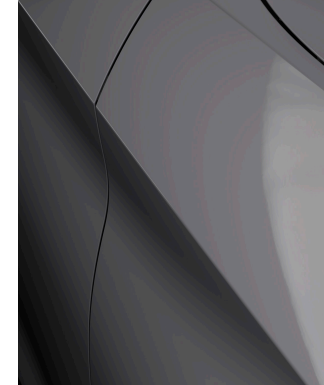
**GLACIAL WHITE** SE SE+ FR  
2Y2Y - Metallic



**MAGNETIC TECH** SE SE+ FR  
S7S7 - Metallic



**DESIRE Red** SE SE+ FR  
E1E1 - Special



**Graphene Grey** SE SE+ FR  
R6R6 - Special

Colours can vary from screen to screen and printer to printer. Please contact your local dealer to view colour swatches.

# Wheels



**URBAN 16"  
ALLOY WHEELS**  
**SE**

16"



**DYNAMIC 17"  
ALLOY WHEELS**  
**SE+**

17"

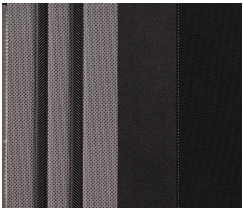


**PERFORMANCE 18" MA-  
CHINED COSMO GREY  
ALLOY WHEELS** **FR**

18"

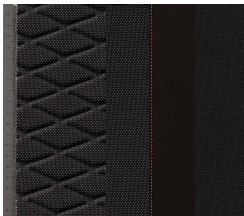
SE **SE**  
SE+ **SE+**  
FR **FR**  
Standard **Standard**  
Optional **Optional**

# Upholsteries



CLOTH - AX

SE SE+



CLOTH - AZ

FR

SE SE  
SE+ SE+  
FR FR  
Standard  
Optional



The  
technical bit.

Optional extras &  
technical info.



# Leon optional extras

Paint Finishes	Option Code	Variant	SE	SE+	FR	RRP From
Soft Paint	*	5D   SP	S	S	S	No Cost
Metallic Paint	MP1	5D   SP	O	O	O	€726
Special Metallic	MP5	5D   SP	-	-	O	€899

Infotainment	Option Code	Variant	SE	SE+	FR	RRP From
12.9" Navigation System [Requires PFK]	ZN2	5D SP	O	O	S	€1,341
SEAT Full Digital Cockpit	PFK	5D SP	O	O	S	€517

Other Items						
Sunroof [Panoramic for SP]	PTC	5D SP	O	O	-	€1,158
Space Saving Spare Wheel [Not for eHYBRID]	PG6	5D SP	O	O	-	€93
Comfort Pack Rear - Centre Armrest in Front - 2x USB C-Front   2x USB-C Rear - 3 Zone Climatronic Air Con	P2A	5D SP	O	O	S	€463
Matrix LED	PXM	5D SP	-	-	O	€1,318
Wireless Charger	PB9	5D SP	O	O	O	€258
Keyless Advanced [Requires Alarm]	PQS	5D SP	O	O	O	€321
Electric Tailgate [Sportstourer Only]	PCD	SP	O	O	O	€635
Rear View Camera	PCI	5D SP	-	S	O	€348
<b>Winter Pack:</b> - Heated Front Seats - Heated Steering Wheel	PW1	5D SP	O	O	O	€508
Additional Airbags: - Rear Side Airbag - Driver Knee Airbag - Central Airbag	PA7	5D SP	O	O	O	€406
Pre-Crash	PAQ	5D SP	O	O	O	€191
Logo Elimination	PQN	5D SP	O	O	O	No Cost
SEAT Sound System	PNS	5D SP	O	O	O	€508
Alarm System	WAS	5D SP	O	O	O	€369

**O : Optional | S: Standard | -: Not Available** Note: \*RRP From is based on the lowest available VRT rate for that model range, adding options to vehicles with higher VRT rates will cause options to increase in cost. The addition of optional extras may result in the vehicle increasing in Co2 g/km and therefore, attracting a higher rate of VRT than described in this product guide. For your exact configuration value, both Co2 g/km and RRP, please visit [the.seat.ie/configurator](http://the.seat.ie/configurator)

# Leon 5D – Technical Information.

Engine	KLG24X	KLG26Z	KLG2JX	KLG2LZ	KLG50Y
Cylinder/Valve (total)	4/16				
Displacement (cc)	1498		1968		1498
Cylinder bore and stroke (mm)	74.5/85.9		81.0/95.5		74.5/85.9
Compression ratio	12.0		16.0		11.5
Maximum power (kW (HP)/rpm)	85 (116)/5000-6000		85(116)/2750-4250	110(150)/3000-4200	150(204)/4000-6000
Maximum torque (Nm/rpm)	220/1500-3000		300/1600-2500	360/1600-2750	350/850-4000
Atmospheric/Supercharged	Turbo Charged				
Fuel type	Petrol		Diesel		PHEV

Performance					
Maximum speed (km/h)	197	197	199	214	220
Acceleration 0-80 km/h (s)	6.8	7.0	7.0	5.6	5.5
Acceleration 0-100 km/h (s)	10.4	10.4	10.5	8.3	7.7

Electric System					
Battery Capacity [kWh]	-	-	-	-	25.8 (20 net)
Battery Type	-	-	-	-	Li-ion
Electric Range [km]	-	-	-	-	133-125
Charging time AC 11kW 0-100% SoC	-	-	-	-	2hrs 30 mins
Charging time DC up to 50kW 10-80% SoC	-	-	-	-	26 mins

Other Information					
Turning diameter (m)	10.8				
Gearbox Type	Manual 6-Speed	DSG 7-Speed	Manual 6-Speed	DSG 7-Speed	DSG 6-Speed
Length/width/height (mm)	4368 / 1799 / 1456				4368/1799/1460
Wheelbase (mm)	2686				2686
Boot capacity (l)	380				270
Fuel tank capacity (l)	45				40
Maximum towing weight w/brake 12% (kg)	1300		1500	1600	1700



# Leon SP – Technical Information

Engine	KLD24X	KLD26Z	KLD2JX	KLD2LZ	KLD50Y
Cylinder/Valve (total)	4/16				
Displacement (cc)	1498		1968		1498
Cylinder bore and stroke (mm)	74.5/85.9		81.0/95.5		74.5/85.9
Compression ratio	12.0		16.0		11.5
Maximum power (kW (HP)/rpm)	85 (116) / 5000-6000		85 (116) / 2750-4250	110(150) / 3000-4200	150(204)/ 4000-6000
Maximum torque (Nm/rpm)	220/1500-3000		300/1600-2500	360 / 1600 - 2750	350/ 850- 4000
Atmospheric/Supercharged	Turbo Charged				
Fuel type	Petrol		Diesel		PHEV

## Performance

Maximum speed (km/h)	197	197	199	216	220
Acceleration 0-80 km/h (s)	7.1	7.2	7.2	5.8	5.7
Acceleration 0-100 km/h (s)	10.7	10.7	10.8	8.6	7.9

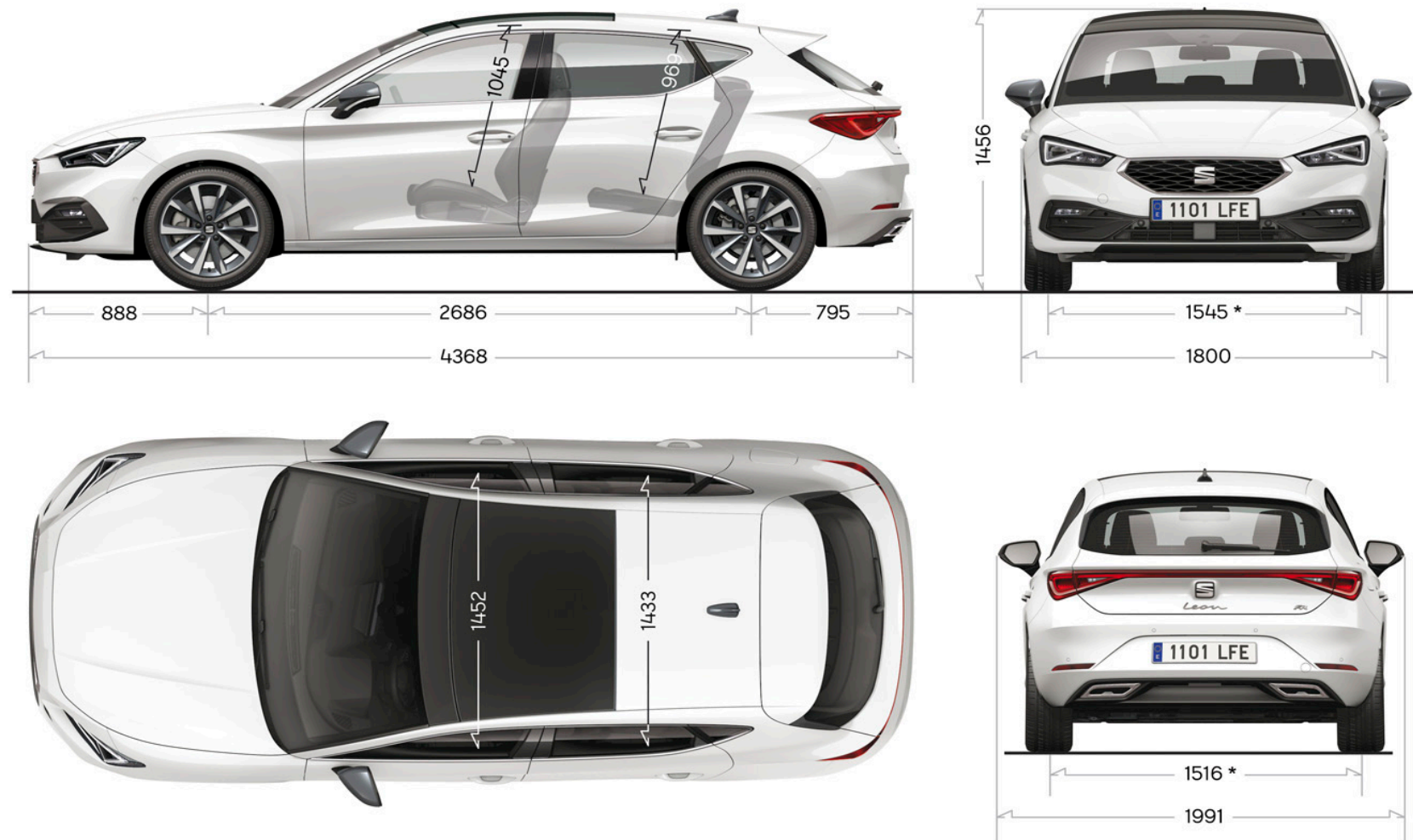
## Electric System

Battery Capacity [kWh]	-	-	-	-	25.8 (20 net)
Battery Type	-	-	-	-	Li-ion
Electric Range [km]	-	-	-	-	131-124
Charging time AC 11kW 0-100% SoC	-	-	-	-	2hrs 30 mins
Charging time DC up to 50kW 10-80% SoC	-	-	-	-	26 mins

## Other Information

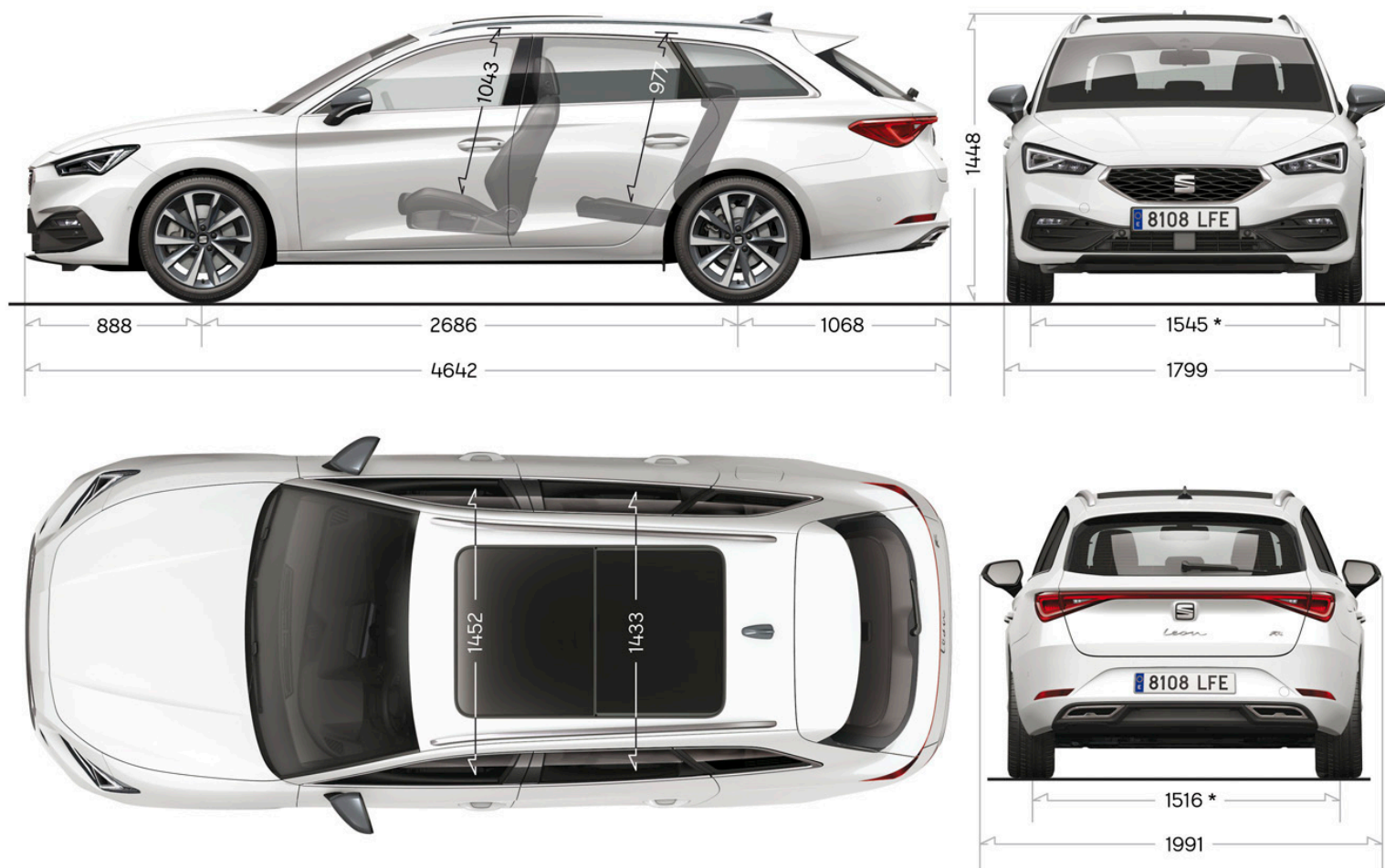
Turning diameter (m)	10.8				
Gearbox Type	Manual 6-Speed	DSG 7-Speed	Manual 6-Speed	DSG 7-Speed	DSG 6-Speed
Length/width/height (mm)	4642 / 1799 / 1475				
Wheelbase (mm)	2686				
Boot capacity (l)	620				470
Fuel tank capacity (l)	45				40
Maximum towing weight without brake (kg)	690	700	730	750	750
Maximum towing weight w/brake 12% (kg)	1300		1500	1600	1700

# Dimensions - 5D



\* Model with 195/65 R15 ET45

# Dimensions – SP



\* Model with 195/65 R15 ET45