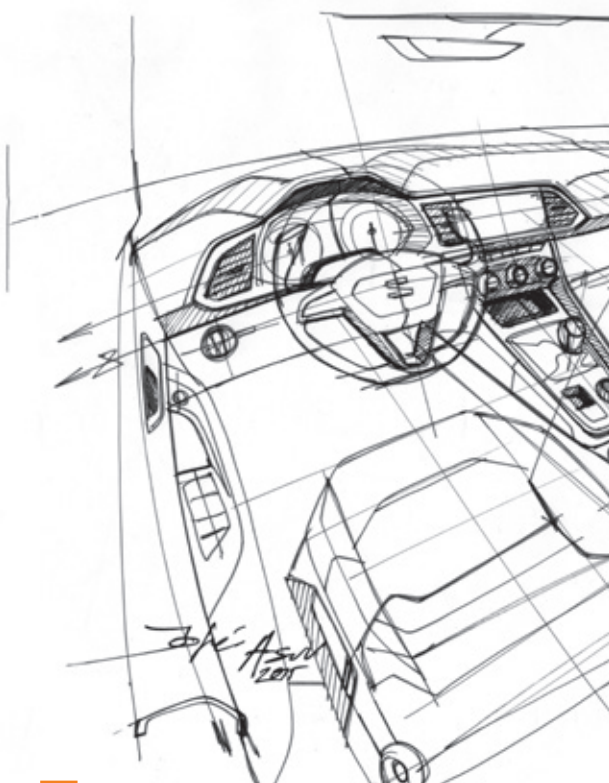
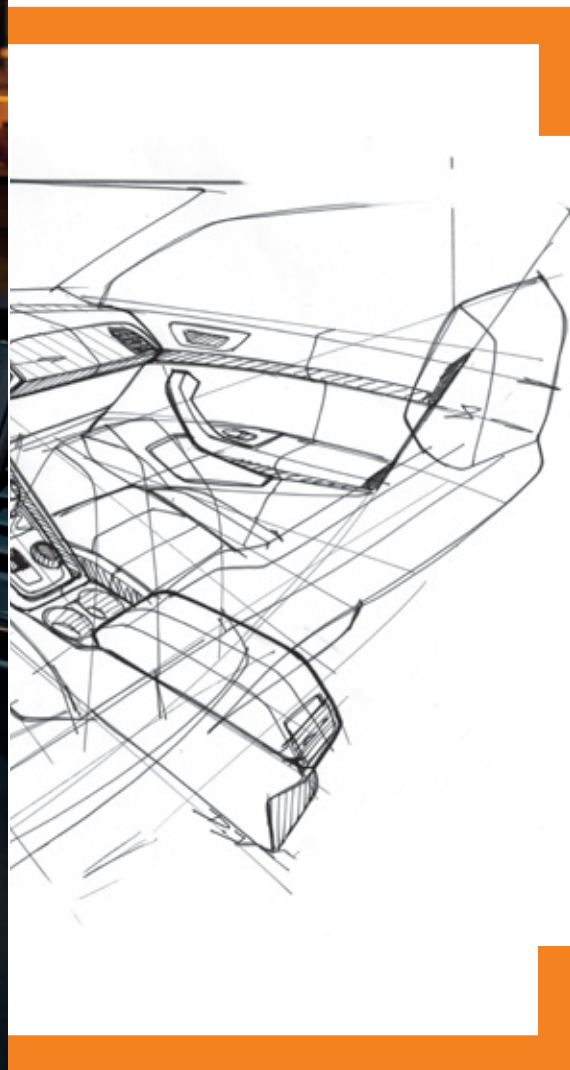


ENJOY.....





...
THE RIDE



DO YOU KNOW THE SOCIOECONOMIC IMPACT OF SEAT IN THE SPANISH ECONOMY?

FIGURES FOR THE 2015 FINANCIAL YEAR

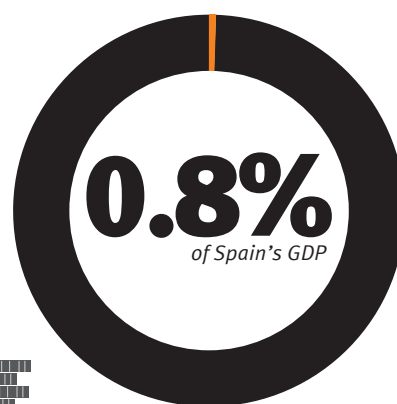
Summary of the study performed by PricewaterhouseCoopers (PWC) based on the consolidated figures of SEAT, S.A. and Centro Técnico de SEAT, S.A. for the 2015 financial year, in order to highlight the company's contribution in economic, fiscal, social and environmental terms, and in aspects such as innovation, quality and design.

In 2016, SEAT, S.A. completed the merger by absorption of the company Centro Técnico de SEAT, S.A. (see note 23 of the Notes to the Annual Accounts).

STRENGTH OF THE COMPANY

/ Turnover reached 8,400 million euros, which represents 0.8% of national GDP.

In terms of turnover, SEAT is the 13th largest company in Spain, the largest in Catalonia and the largest in the automotive sector.



BUSINESS AND ECONOMIC DRIVER

SEAT is one of the largest companies at a national, regional and sectoral level in terms of turnover.

/ Exports, at around 7,000 million euros, represented 2.8% of Spain's total exports.

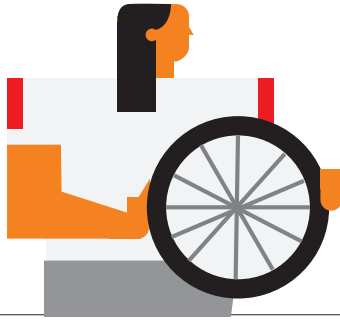
SEAT is the company with the highest exports in the Spanish industry and the Martorell factory produces the most cars in Spain.



SEAT exports of approximately

7,000
million euros

+2.8%
OF THE
TOTAL IN
SPAIN

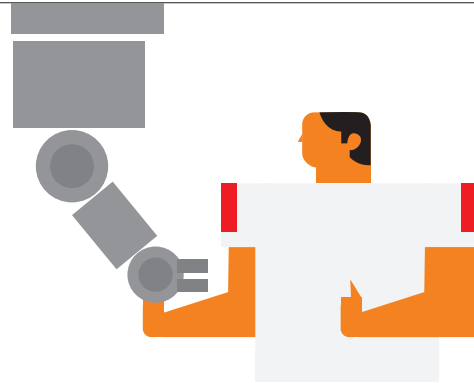


CONTRIBUTION TO R&D

Largest industrial investor in R&D in Spain, through the SEAT Technical Centre (CTS).

/ The improvement in productivity levels allowed the production cost per unit to be reduced by 10.6% compared with 2012.

SEAT has positioned its vehicles at the top of the productivity rankings, as well as receiving prestigious awards such as the Lean Award and Lean & Green Management Award, which certifies the Martorell factory as the most efficient in the sector in Europe.



/ The resources allocated to total investment and R&D expenses amounted to around 600 million euros, 7% of revenues. Between 2011 and 2015, the funds used totalled 2,700 million euros.

SEAT is one of the largest investors in Spain.



/ More than 370 million euros were allocated to activities related to R&D, which represented 4.5% of revenues and 2.9% of the total resources allocated to R&D in Spain.

SEAT is the largest industrial investor in R&D in Spain and the fourth largest Spanish company in terms of resources allocated to R&D.

/ The company's fiscal contribution was more than 700 million euros: VAT collected, company Social Security payments, employee Social Security payments, employees' Personal Income Tax, Corporation Tax and local taxes (*).

SEAT is one of Spain's major contributors in terms of taxes.

(*) The contribution with regard to VAT refers to the tax collected by SEAT, S.A. and by Centro Técnico de SEAT, S.A. The Corporation Tax corresponds to that of the consolidated tax group.

TOP EMPLOYER



/ The company's contribution to employment in Spain (direct, indirect and induced) is close to 100,000 jobs.

SEAT is the largest employer in the sector and one of the largest in the country. For every job created directly by SEAT, a total of 7 new jobs are created in Spain.



for every direct job at SEAT



7
new jobs nationally

/ 97% of the contracts drawn up were permanent and voluntary staff rotation was just 0.5%.

SEAT exceeds the industrial sector average by 17 percentage points and the average in Spain by 22 points. Voluntary staff rotation is eight times lower than the average of the Top Employer companies in Spain.

/ 24% of employees are millennials. 53% of new joiners were under 30 years of age and the number of permanent contracts in this age bracket was 30 points above the national average.

In a context of high youth unemployment, SEAT is committed to hiring young employees.

/ 21% of the Martorell factory's workforce is made up of women and there are no differences in salaries between men and women.

The number of women at the SEAT factory is approximately double the average for car factories in Spain (11%).



97%
permanent contracts in SEAT

75%
national average of permanent contracts

53%
of all new hires were under 30 years of age



21%
women in SEAT's factories

11%
women in car factories in Spain

SUSTAINABILITY

/ The investment allocated to reducing the company's environmental impact was over 17 million euros.

The resources allocated to activities to mitigate the environmental impact reached an average of more than 1,200 euros per employee.

€1,200

the financial resources allocated to environmental protection per SEAT employee

€400

average for the automotive sector in Spain

/ The initiatives carried out with regard to energy efficiency since 2011 have allowed the company to avoid the consumption of more than 100,000 MWh, which is equivalent to the annual consumption of more than 10,200 Spanish households.

The Ecomotive Factory Plan is aimed at optimising the company's resources and reducing the key environmental indicators per vehicle produced.